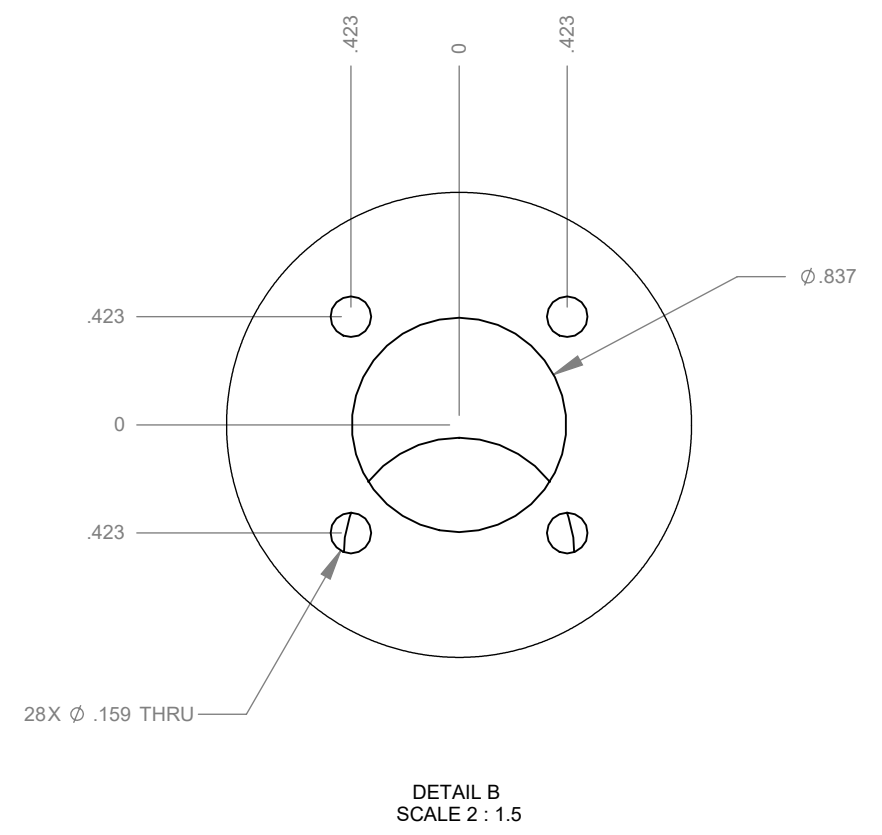
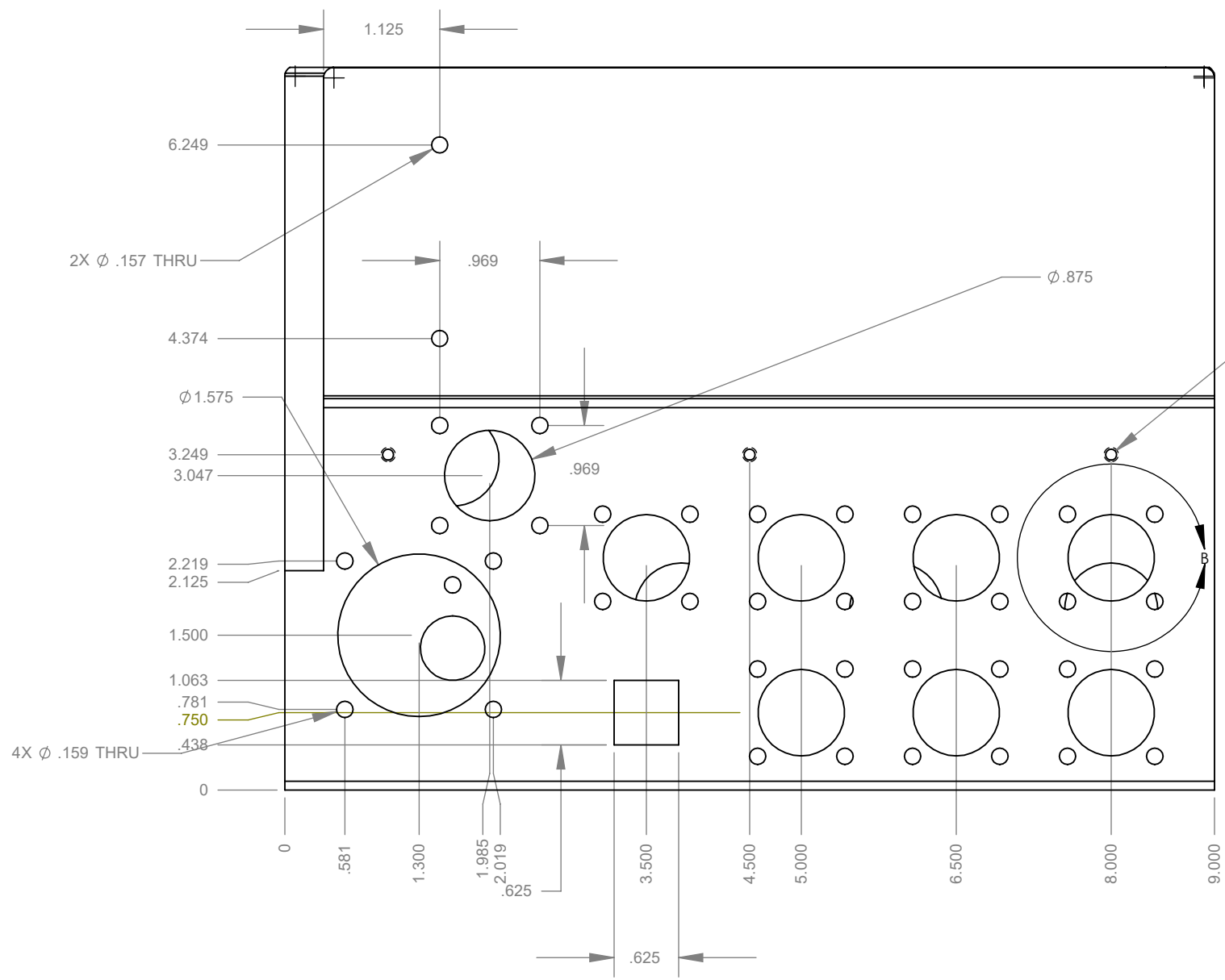


**PROPRIETARY AND CONFIDENTIAL**  
 THE INFORMATION CONTAINED IN THIS DRAWING IS THE SOLE PROPERTY OF AFM ENGINEERING, INC. ANY REPRODUCTION IN PART OR AS A WHOLE WITHOUT THE WRITTEN PERMISSION OF AFM ENGINEERING INC. IS PROHIBITED.

		DIMENSIONS ARE IN INCHES		NAME		DATE	
		TOLERANCES:		DRAWN		8/27/2004	
		FRACTIONAL $\pm$		CHECKED		-	
		ANGULAR: MACH $\pm$ BEND $\pm$		ENG APPR.			
		TWO PLACE DECIMAL $\pm$		MFG APPR.			
		THREE PLACE DECIMAL $\pm$		Q.A.			
		MATERIAL		COMMENTS:			
		6061 Alloy					
NEXT ASSY		USED ON		FINISH			
				-			
APPLICATION		DO NOT SCALE DRAWING					
				AFM Engineering, Inc.			
				AFM Engineering, Inc. Hot Stamp Control Box Hot Stamp Control Box Inside AFM Part No 102800			
SIZE	DWG. NO.			REV.			
B	19000-001_RevE						
SCALE: 1:1		WEIGHT: 0.970		SHEET 1 OF 3			

REVISIONS				
ZONE	REV.	DESCRIPTION	DATE	APPROVED
-	B	Added Hole for 9 pin plug	1/27/2012-	CSI

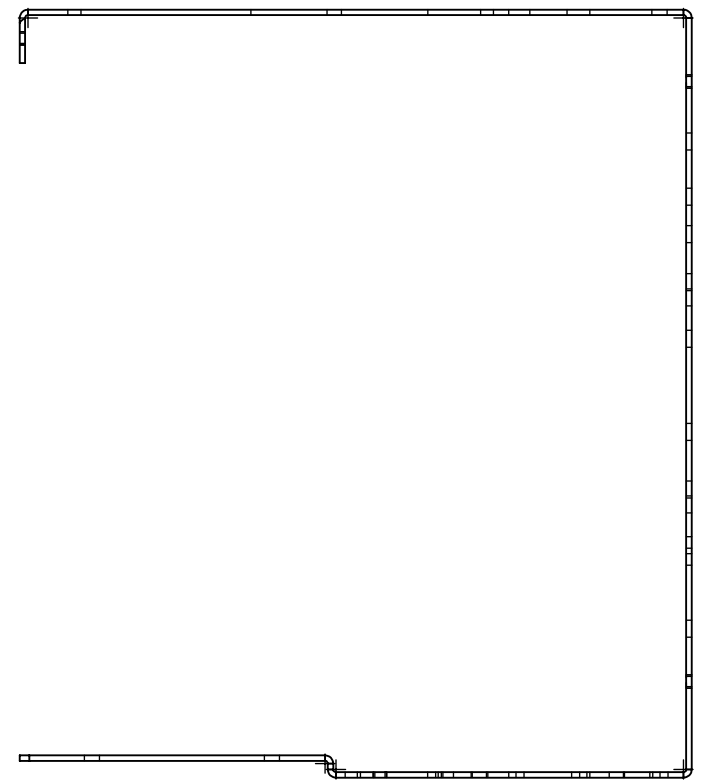
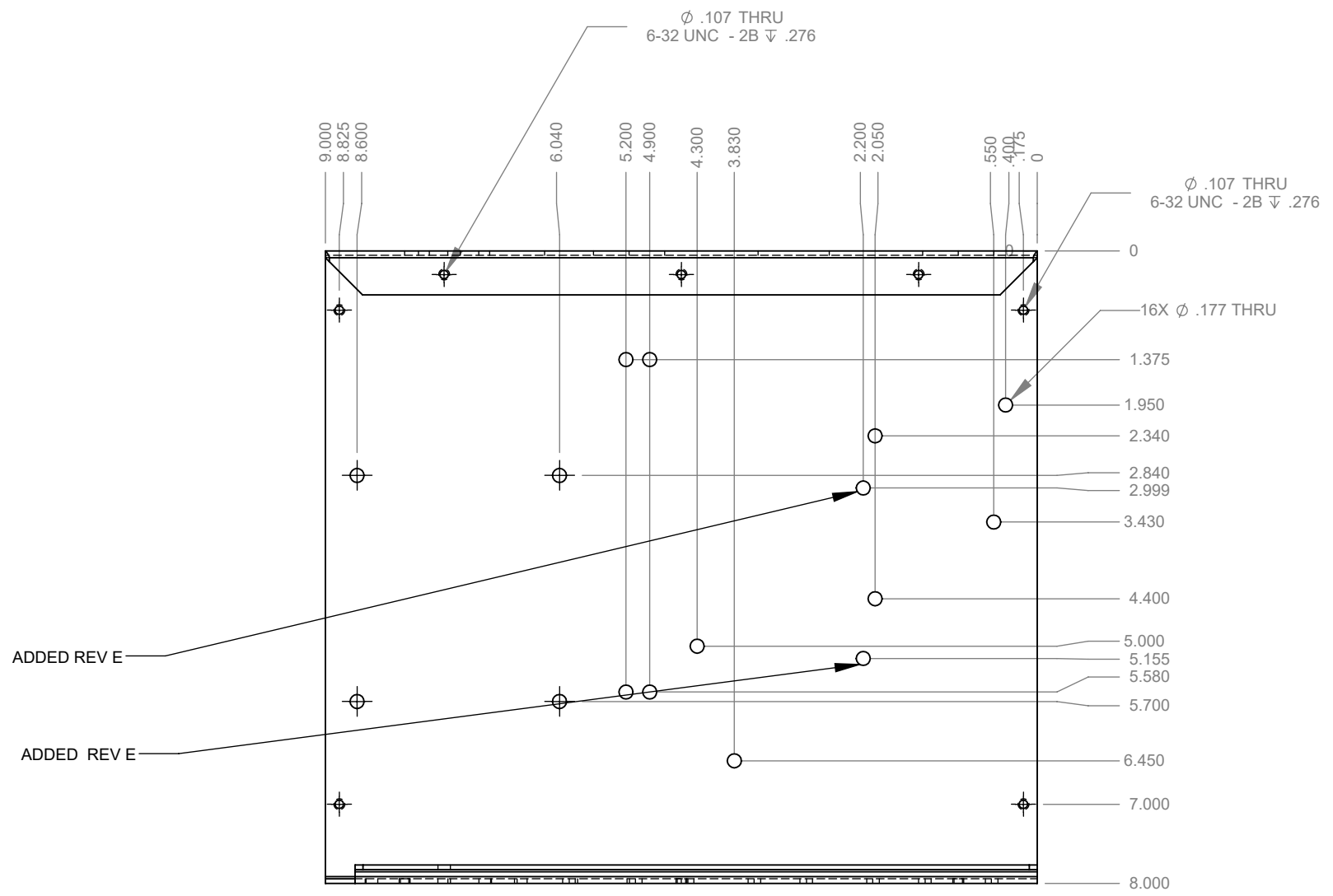


**PROPRIETARY AND CONFIDENTIAL**  
 THE INFORMATION CONTAINED IN THIS DRAWING IS THE SOLE PROPERTY OF AFM ENGINEERING, INC. ANY REPRODUCTION IN PART OR AS A WHOLE WITHOUT THE WRITTEN PERMISSION OF AFM ENGINEERING INC. IS PROHIBITED.

DIMENSIONS ARE IN INCHES		NAME	DATE
TOLERANCES:		DRAWN	Irwin
FRACTIONAL $\pm$		CHECKED	Irwin
ANGULAR: MACH $\pm$ BEND $\pm$		ENG APPR.	
TWO PLACE DECIMAL $\pm$		MFG APPR.	
THREE PLACE DECIMAL $\pm$		Q.A.	
MATERIAL		COMMENTS:	
6061 Alloy			
NEXT ASSY	USED ON		
APPLICATION	DO NOT SCALE DRAWING		

AFM Engineering, Inc.		
AFM Engineering, Inc. Hot Stamp Control Box		
AFM Part		
SIZE	DWG. NO.	REV.
B	19000-001_RevE	
SCALE: 1:1	WEIGHT: 0.971	SHEET 2 OF 3

REVISIONS				
ZONE	REV.	DESCRIPTION	DATE	APPROVED
-	E	ADDED TWO HOLES IN SHEET 4	8/17/2020	CSI



ADDED REV E

ADDED REV E

**PROPRIETARY AND CONFIDENTIAL**

THE INFORMATION CONTAINED IN THIS DRAWING IS THE SOLE PROPERTY OF AFM ENGINEERING, INC. ANY REPRODUCTION IN PART OR AS A WHOLE WITHOUT THE WRITTEN PERMISSION OF AFM ENGINEERING INC. IS PROHIBITED.

		DIMENSIONS ARE IN INCHES		NAME		DATE		AFM Engineering, Inc.	
		TOLERANCES:		DRAWN		8/27/2004			
		FRACTIONAL $\pm$		CHECKED		-			
		ANGULAR: MACH $\pm$ BEND $\pm$		ENG APPR.					
		TWO PLACE DECIMAL $\pm$		MFG APPR.					
		THREE PLACE DECIMAL $\pm$		Q.A.					
		MATERIAL		COMMENTS:					
		6061 Alloy							
NEXT ASSY		USED ON		FINISH					
				-					
APPLICATION		DO NOT SCALE DRAWING							
				SIZE		DWG. NO.		REV.	
				B		19000-001_RevE			
				SCALE: 1:2		WEIGHT: 0.970		SHEET 3 OF 3	

AFM Engineering, Inc.  
Hot Stamp Control Box  
Hot Stamp Control Box Inside  
AFM Part No 102800