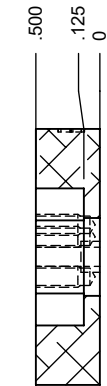
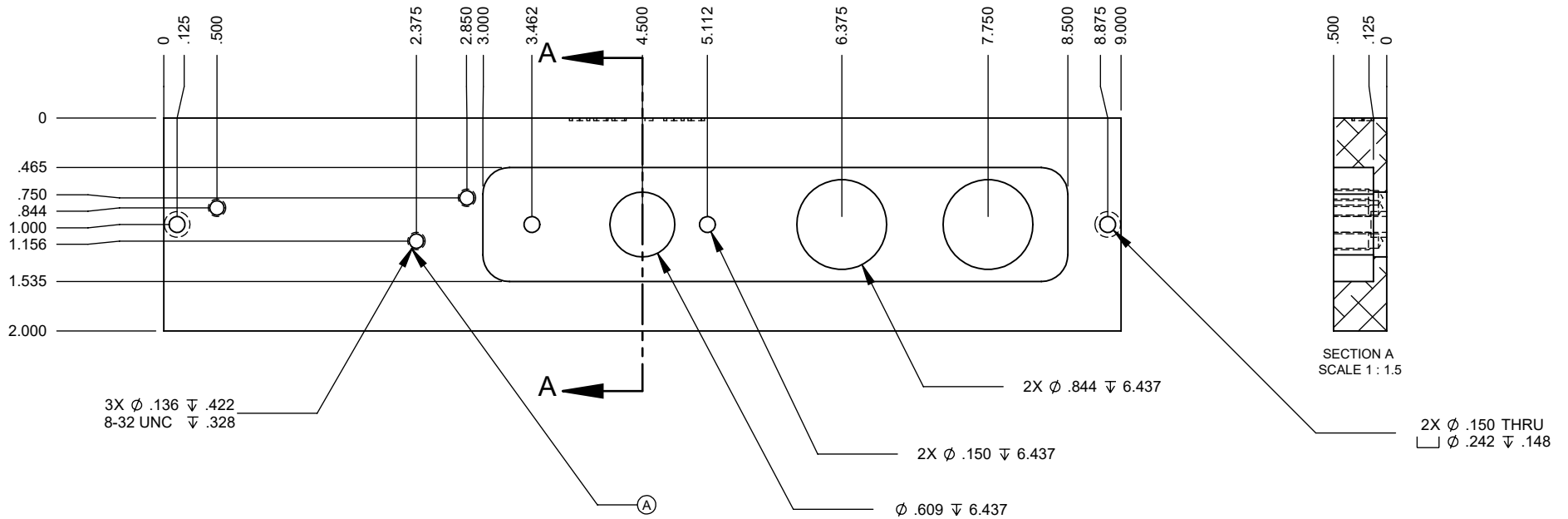
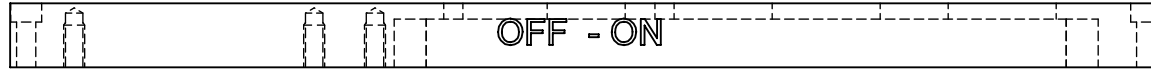


REVISIONS

ZONE	REV.	DESCRIPTION	DATE	APPROVED
	A	Reduced relief area and added holes for terminal block and ground lug.	11/12/2010	C.S.I.



SECTION A
SCALE 1 : 1.5

2X Ø .150 THRU
□ Ø .242 ±.148

PROPRIETARY AND CONFIDENTIAL

THE INFORMATION CONTAINED IN THIS DRAWING IS THE SOLE PROPERTY OF AFM ENGINEERING, INC. ANY REPRODUCTION IN PART OR AS A WHOLE WITHOUT THE WRITTEN PERMISSION OF AFM ENGINEERING INC. IS PROHIBITED.

		DIMENSIONS ARE IN INCHES TOLERANCES: FRACTIONAL ±.032 ANGULAR: MACH ± BEND ± TWO PLACE DECIMAL ±.010 THREE PLACE DECIMAL ±.005		NAME	DATE
		MATERIAL 6061 Alloy		Irwin	2/10/2006
		FINISH Anodize Hard Black		Irwin	2/10/2006
NEXT ASSY	USED ON	COMMENTS:			
APPLICATION		DO NOT SCALE DRAWING			

AFM Engineering, Inc.

AFM Engineering Inc.
Light Touch Button,
Switch Plate
AFM Part #104717

SIZE	DWG. NO.	REV.
A	19050-002	
SCALE:1:1	WEIGHT: 0.642	SHEET 1 OF 1