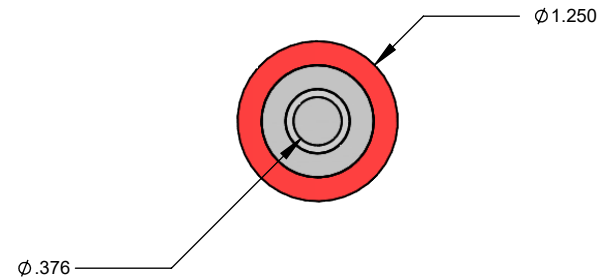
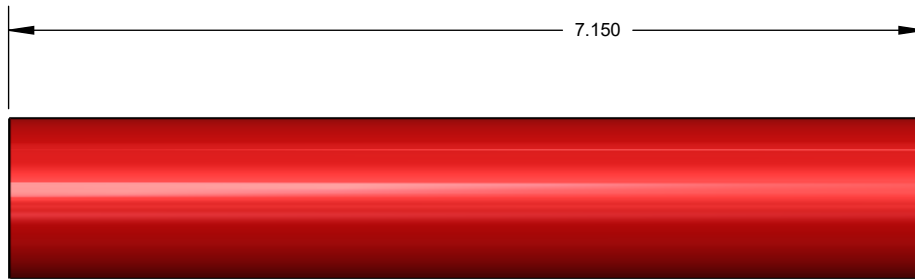
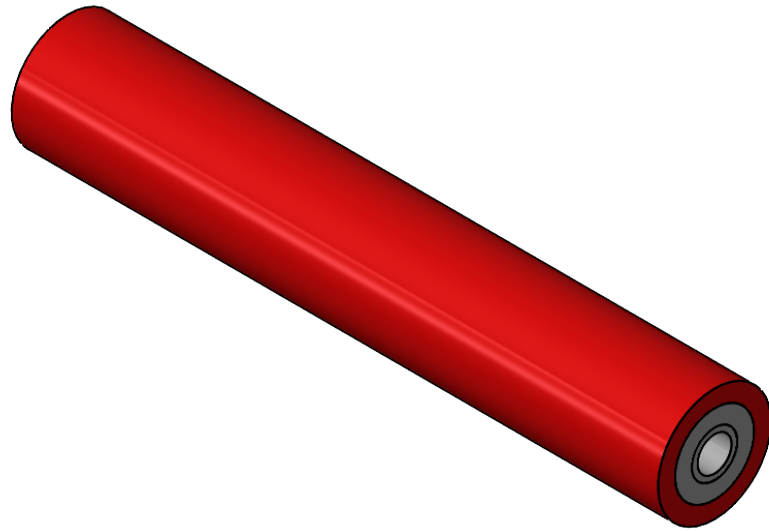


S:\AFMMachines\15000 Foil Feed Systems\15300 Rollers\15320 Rubber Franklin\15322 6X8\

ITEM NO.	PART NUMBER	partno	DESCRIPTION	QTY.
1	15322-001	105256	Roller, Rubber, Core 6X8 6X12	1
2	15322-002	105257	Rubber	1
3	6391K173	103859	Bushing 1/2 Dia 1/2 long .375 ID.	2



PROPRIETARY AND CONFIDENTIAL

THE INFORMATION CONTAINED IN THIS DRAWING IS THE SOLE PROPERTY OF AFM ENGINEERING, INC. ANY REPRODUCTION IN PART OR AS A WHOLE WITHOUT THE WRITTEN PERMISSION OF AFM ENGINEERING INC. IS PROHIBITED.

		DIMENSIONS ARE IN INCHES TOLERANCES: FRACTIONAL $\pm .032$ ANGULAR: MACH \pm BEND \pm TWO PLACE DECIMAL $\pm .010$ THREE PLACE DECIMAL $\pm .005$	NAME	DATE	
			DRAWN	Irwin	1/20/2010
			CHECKED	Irwin	1/20/2010
			ENG APPR.		
			MFG APPR.		
		MATERIAL	Q.A.		
NEXT ASSY	USED ON	FINISH	COMMENTS:		
APPLICATION	DO NOT SCALE DRAWING				

AFM Engineering, Inc.

Franklin
 Part # 102648
 Roller, Rubber, 6X8 6X12
 AFM Part #102648

SIZE	DWG. NO.	REV.
A	15322-000	
SCALE: 1:1	WEIGHT: 0.556	SHEET 1 OF 1