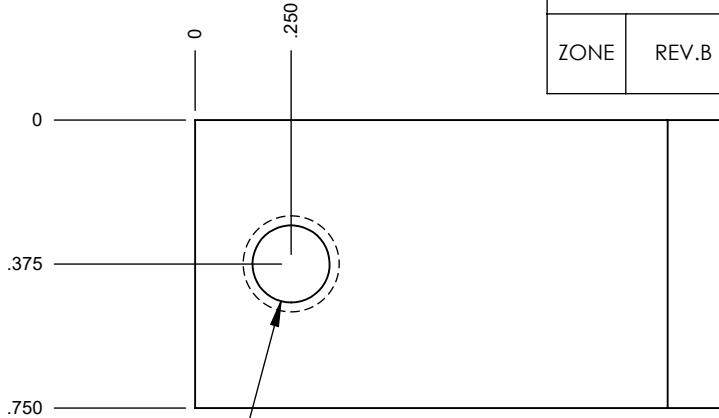
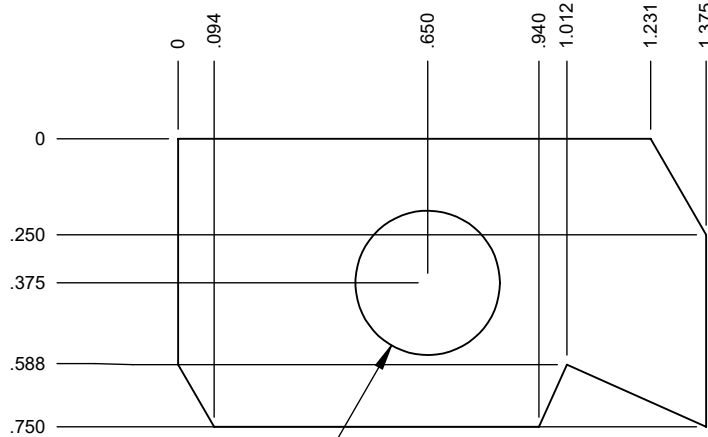


REVISIONS

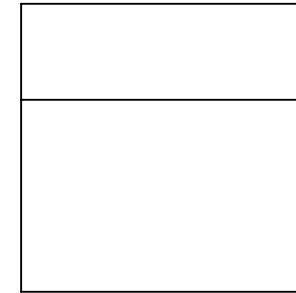
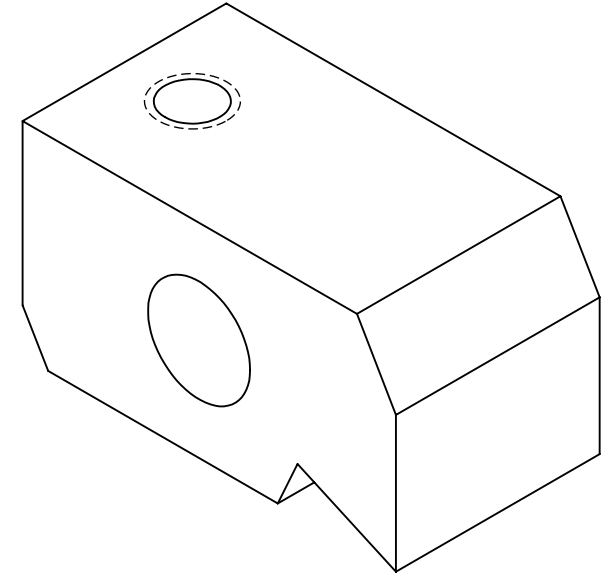
ZONE	REV.B	Changed Hole Callout to tap through	D3/10/2022ATE	c.s.i.
------	-------	-------------------------------------	---------------	--------



Ø .201 THRU ALL
1/4-20 UNC THRU ALL



Ø .376 THRU



PROPRIETARY AND CONFIDENTIAL

THE INFORMATION CONTAINED IN THIS DRAWING IS THE SOLE PROPERTY OF AFM ENGINEERING, INC. ANY REPRODUCTION IN PART OR AS A WHOLE WITHOUT THE WRITTEN PERMISSION OF AFM ENGINEERING INC. IS PROHIBITED.

		DIMENSIONS ARE IN INCHES TOLERANCES: FRACTIONAL ±.032 ANGULAR: MACH ± BEND ± TWO PLACE DECIMAL ±.010 THREE PLACE DECIMAL ±.005		NAME	DATE	<p>AFM Engineering, Inc.</p> <p>AFM Engineering, Inc. Heater Head, Clamp, 2"X4" 3"X6" AFM Part #104560</p>	
		MATERIAL	CR 1018	DRAWN	Irwin		-
		FINISH	-	CHECKED	Irwin		-
NEXT ASSY	USED ON			ENG APPR.			
APPLICATION		DO NOT SCALE DRAWING		MFG APPR.			
				Q.A.			
				COMMENTS:			
				SIZE	DWG. NO.	REV.	
				A	37110-002		
				SCALE: 2:1		WEIGHT: 0.023	
						SHEET 1 OF 1	