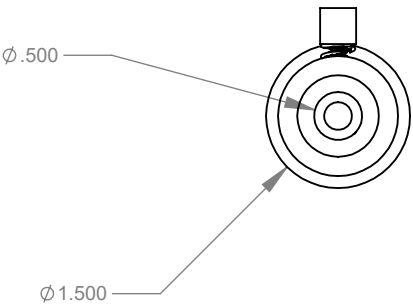
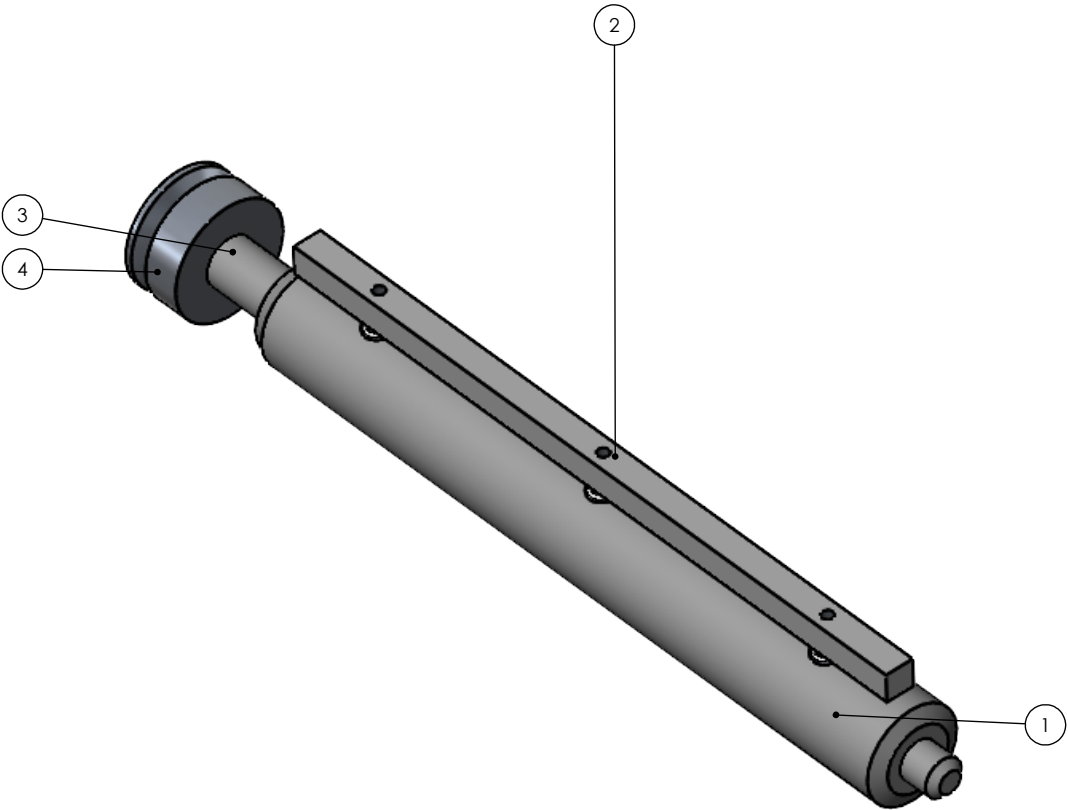
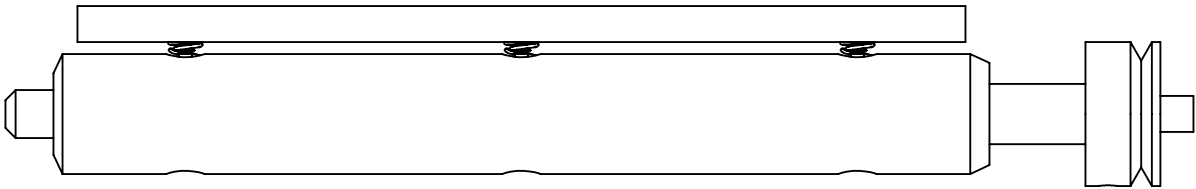
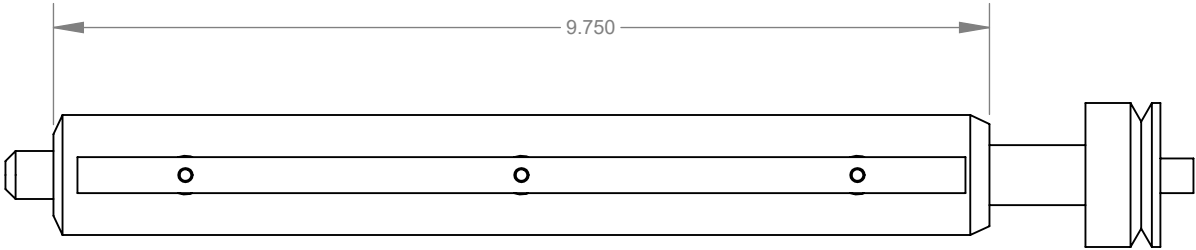


S:\AFMMACHINES\15000 FOIL FEED SYSTEMS\15400 TAKE UP\15460 ACROMARK\9.75\



ITEM NO.	PART NUMBER	PartNo	DESCRIPTION	QTY.
1	15460-9.750-001	104691		1
2	15460-9.750-002	104692	Acromark 10.00 Tension Bar	1
3	001_Bushing	104693	Bushing	1
4	002_Pulley	104694	Foil Feed Large Pulley	1
5	Sholder Bolt	100873	10-24 x 3/4 18-8 SS	3
6	LC-038E-9S	100872	Spring	3



PROPRIETARY AND CONFIDENTIAL THE INFORMATION CONTAINED IN THIS DRAWING IS THE SOLE PROPERTY OF AFM ENGINEERING, INC. ANY REPRODUCTION IN PART OR AS A WHOLE WITHOUT THE WRITTEN PERMISSION OF AFM ENGINEERING INC. IS PROHIBITED.				DIMENSIONS ARE IN INCHES TOLERANCES: FRACTIONAL \pm ANGULAR: MACH \pm BEND \pm TWO PLACE DECIMAL $\pm .010$ THREE PLACE DECIMAL $\pm .005$		NAME	DATE	AFM Engineering, Inc.	
					DRAWN	Irwin	1/13/2021	AFM Engineering, Inc.	
					CHECKED	Irwin	-	AFM PART # 104643	
					ENG APPR.				
					MFG APPR.				
				MATERIAL					
				FINISH					
	NEXT ASSY	USED ON							
	APPLICATION			DO NOT SCALE DRAWING					
						COMMENTS:			
								SIZE	REV.
								DWG. NO.	
								B	15460-9.750-000
								SCALE: 1:2	WEIGHT: 1.432
								SHEET 1 OF 1	